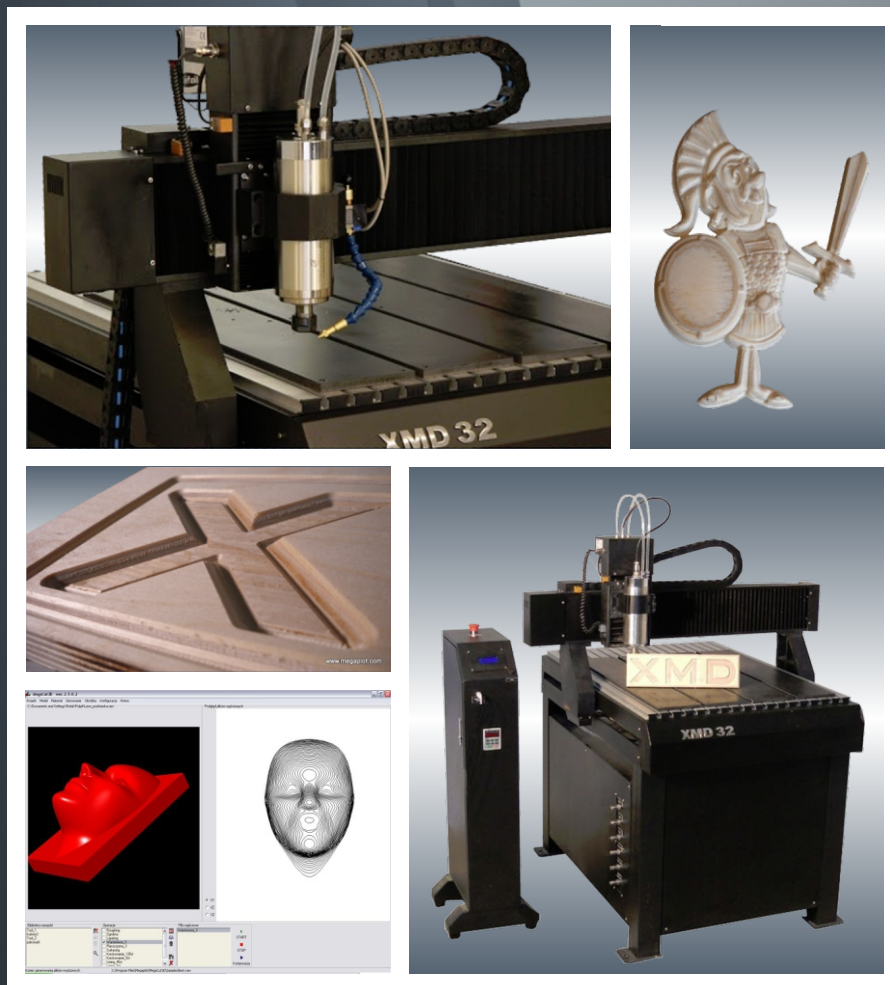


THE XMD SERIES OF 3D CNC ROUTERS FOR CUTTING, MILLING AND ENGRAVING OF PLASTICS, WOOD, ALUMINIUM, ETC.

DESIGNED AND MANUFACTURED IN POLAND
WORLD-FAMOUS TECH SUPPORT AND SERVICE
ADVANCED MEGACUT 3D SOFTWARE (FREE UPDATES!)



THE XMD ROUTERS ARE PERFECT FOR 2D AND 3D TOOLING OF SUCH MATERIALS
AS WOOD, PLYWOOD, PVC, PLEXIGLASS, POLYCARBON, EPS, XPS, ALUMINIUM, ETC.

Dear Customer,

We hope our 20 years of experience in CNC machinery designing, manufacturing, selling and servicing, as well as our great pre- and post-sale technical support appreciated by our customers worldwide, will convince you to enter a long-term co-operation with our company.

For years we have been a company known worldwide for its top quality products. Our hot wire foam cutters, fast wire cutters, CNC routers as well as laser cutters are known to be innovative and reliable not only in Poland, but throughout Europe and all over the world.

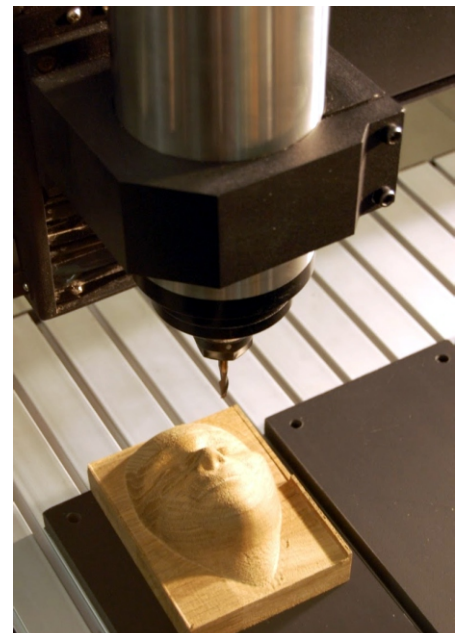
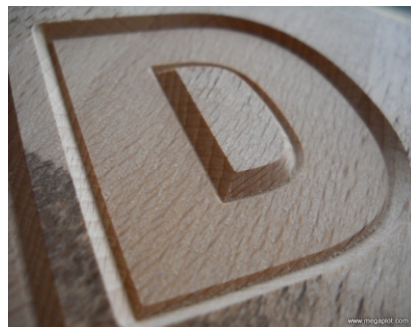
We are proud to have developed into a company represented by over 30 distributors worldwide and having thousands of customers in over 50 countries on 5 continents.

Today we would like to present our new and very popular XMD series of 3D CNC routers, at the same reminding you that we also manufacture such machines as hot wire cutters for cutting 2D and 3D shapes in EPS and XPS foams, fast wire cutters for polyurethane and other soft and rigid foams, as well as laser cutters for cutting and engraving plexiglass, fabrics, paper, wood, plywood, etc.

Please consider visiting our factory in Poland where you will be able to see our machines in action and test them as per your requirements.

Should you have any doubts or questions, please do not hesitate to contact us - we are here to help.

the MegaPlot team



OUR XMD SERIES OF CNC ROUTERS is perfect for cutting, milling and engraving any 2D and 3D shapes in wood, plywood, plexiglass, polycarbon, PVC, aluminium, brass, bronze, dibond, EPS and XPS foams and many similar materials.

Available models:

	XMD32	XMD46	XMD48
table working area (mm):	700x800	1200x1800	1250x2500
max. up-down movement (mm):	90	90	90
spindle:	2.2kW	2.2kW	3.0kW
price (EURO)	please e-mail us for current best price		

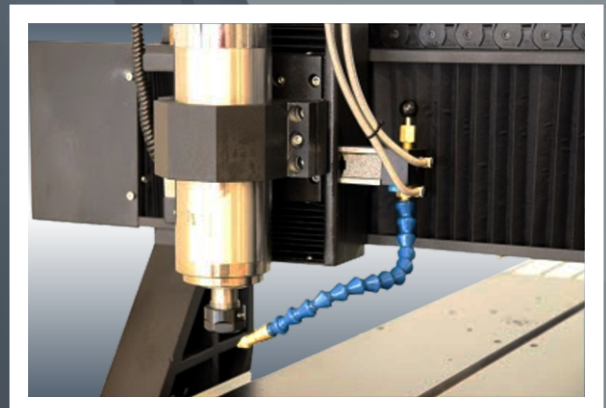
THE ABOVE PRICES INCLUDE the entire, ready-to-use CNC solution:

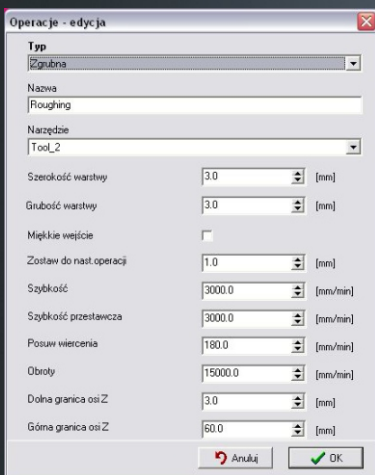
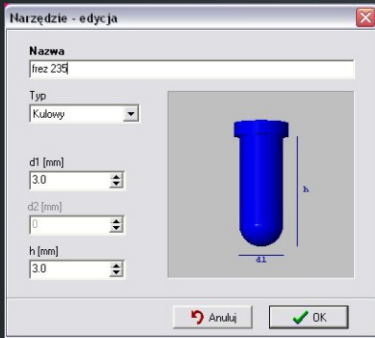
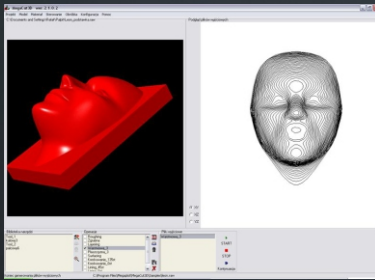
- CNC router with a modern ARM-based electronic controller, USB communication (LAN also available) and support for Windows XP, Vista, 7 and 8
- our own, proprietary advanced MegaCut 2D and MegaCut 3D software available in many different language versions with unlimited free updates for all our customers and support for the following file formats: plt (e.g. CorelDraw), dxf and dxf 3D (e.g. AutoCad), RAW 3D (e.g. Rhinoceros 3D), bmp (engraving 3D reliefs based on photos), G-Code (e.g. VisualMill or any other CAM solution)
- water-cooled (very quiet!) and inverter-controlled spindle: 2.2kW or 3.0kW
- unlimited, free, detailed training in our factory
- 12-month warranty (EXW)
- our famous and unlimited pre- and post-sale warranty and post-warranty tech support

THE ABOVE PRICES DO NOT INCLUDE: PC, graphics software, delivery.

PAID UPGRADES:

- oil-mist tool cooling system
*necessary when working with aluminum, etc.
can also use compressed air only, e.g for tooling wood*
- remote with a display
*facilitates workflow, setting of the starting position,
adjusting the cutting parameters etc.*
- LAN communication
*the machine can be controlled from any PC on the local
network, standard USB communication remains intact*





MegaCut 2D and MegaCut 3D SOFTWARE

- multiple language versions and unlimited free updates
- user-friendly interface and intuitive workflow
- tool length measurement: automatic, semi-automatic and manual
- stop and continue at any time
- parameters adjustment on the fly (while the machine is in action)
- built-in output files generation
- detailed manual and unlimited free training at our factory

MegaCut 2D

- support for plt, dxf and G-code
- drawing preview and simulation
- cutting direction and sequence settings
- cut-thru or down-along-a-spiral for thick materials
- selective start from any given shape within a drawing
- lining operation for the fill-in of closed shapes
- multi-layer color-coded drawings
- drilling feature with controlled up and down movement in steps

MegaCut3D

- support for dxf 3D, RAW 3D and BMP
- BMP-based 3D relief support
- 3D model and output files visualizations
- resolution control
- tools and operations libraries
- supported tool types: flat, ball and conical
- built-in operation types: roughing, layering, lining, surfacing and mixed

WARRANTY

All our XMD routers are covered with a complete 12-month warranty including all the electronic and mechanical parts.

All replacement parts are always in stock and can be shipped immediately, typically on the same day when requested.

All customers are also guaranteed unlimited updates for both MegaCut 2D and 3D at no extra cost.

We are famous for our pre- and post-sale technical support, so feel free to contact us any time and we will assist you right away!



LIST OF MATERIALS THAT CAN BE TOOLED ON THE XMD ROUTERS:

- wood, plywood, MDF, HDF, boards, etc.
- plastics: PVC, polycarbon, plexiglass, polyamids, teflon, rubber, etc.
- composites: dibond, engraving laminates, etc.
- „soft” base metals: aluminium, brass, bronze, etc.
- foams, styrofoams, extruded foams, etc.

MATERIALS THAT CANNOT BE TOOLED ON XMD routers - due to the machine construction and type of spindle: steel, glass and stone.



Typical applications for the XMD routers:

- advertising, lettering, logotypes, light boxes
- moulds for thermoforming
- prototyping
- advertising details from plexiglass, PVC, etc.
- LED signs
- aluminium moulds for 3D moulding
- wooden 3D reliefs
- foam coater templates (dibond or plexiglass)
- medals, name plates, informational signs
- machinery markings, labels, name plates, etc.



	XMD32	XMD46	XMD48
table working area (mm):	700x800 mm	1200x1800 mm	1250x2500 mm
max. up-down movement (Z axis):	90 mm	90 mm	90 mm
spindle power:	2.2kW	2.2kW	3.0kW
weight:	180 kg	380 kg	500 kg
external dimensions:	110x130x145 cm	163x230x145 cm	170x300x145 cm
spindle type:	water-cooled (pump and water container included)		
spindle control type:	inverter, complete software-based rotations control		
max. spindle rotations:	24.000 rpm		
max. working speed:	5.000 mm/min.		
software resolution:	0.001 mm		
electronic resolution:	0.001 mm		
tool fixing:	ER 20 standard, 6 mm and 1/8 inch collets included		
machine frame:	cast iron		
table structure:	steel support, aluminium „T” profiles, plastic pads		
accessibility:	full access from all 4 sides		
power usage and requirements:	230V, 50Hz, up to 4kW		
operating conditions:	0-40°C, humidity: up to 90% (non-condensing)		
PC requirements:	Windows XP, Vista 7 or 8, 4GB RAM		
included software:	MegaCut 2D and MegaCut 3D, unlimited free updates		
supported file formats:	plt, dxf, dxf 3D, RAW 3D, bmp, G-Code		
compatible graphics software:	e.g. CorelDraw, AutoCad, Rhino3D, Sketch-up, VisualMill, etc.		
warranty:	12 months (EXW)		
price includes:	router, electronic controller (ARM+USB), MegaCut 2D and 3D, unlimited free training, free software updates		
price does not include:	PC, graphics software, delivery		
paid, optional upgrades:	oil-mist tool cooling remote controller with display LAN communication		

Please consider visiting our factory to see our machines in action. Should this not be possible, feel free to send your sample drawings and/or material and we will do some test cuts for you and send back the samples so you can review the quality.

APART FROM OUR XMD CNC ROUTERS, WE ALSO MANUFACTURE:

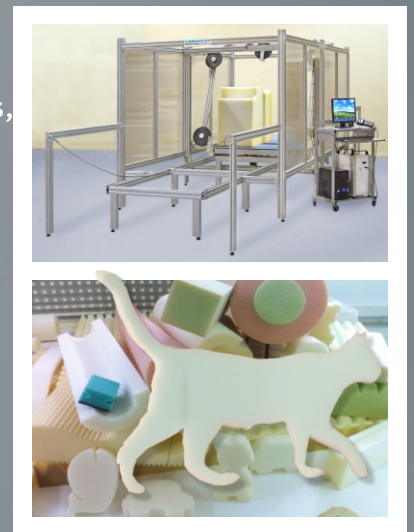


HOT WIRE FOAM CUTTERS

- perfect for cutting expanded and extruded styrofoam (EPS/XPS)
- sheet cutting and 2D and 3D contour shape cutting
- number of cutting wires: 1-20
- wire tensioning: spring, pneumatic or electric
- unique unlimited wire length change independent axis control
- 3D support: cut any 3D models from dxf 3D and RAW 3D files
- accessories: turntable, lathe, shapewire tool, conveyors, etc.
- cross wires @ 90 degrees for simultaneous cutting from two sides
- perfect for cutting letters and logos, decoration, architectural shapes, packaging, insulation, prototypes, etc.

XTR FASTWIRE CUTTERS

- perfect for cutting polyurethane and any other soft and rigid foams, EPS, XPS, rock wool, etc.
- can be used for sheet cutting, contour shape cutting, mattress cutting, etc., out of full-size PUR blocks
- own proprietary advanced FastWire software, compatible with Windows XP, Vista, 7 and 8
- supported file formats: plt, dxf and EPS/AI
- modern electronic controller based on ARM with USB support
- the price includes 5 fast wires, controller, software and delivery
- professional and famous warranty and post-warranty support



LASER CUTTERS

- perfect for cutting any shapes in plexiglass, fabrics, paper, rubber, leather, felt, etc.
- surface engraving on wood, anode, tiles, etc.
- "burning" photos based on bmp files
- software and electronic resolution of 0.001 mm
- laser tubes: 25W or 60W
- available upgrades: remote controller with display and LAN support
- own proprietary advanced software
- supported formats: PLT (CorelDraw), DXF (AutoCad), BMP (photos)
- modern electronic controller based on ARM with USB support
- professional and famous warranty and post-warranty support



Megaplot
ul. Chemiczna 12
41-205 Sosnowiec
POLAND

cnc@megaplot.com
www.megaplot.com

phone: +48 693 707 575
fax: +48 32 291 08 72